

# Connecticut Songsmith

Newsletter of the Connecticut  
Songwriters Association



CSA is an educational, non-profit organization dedicated to  
improving the art and craft of original musical and lyrical composition.  
Serving music's artisans and craftsmen since 1979.



Dec 2007  
Vol. XXVIII  
Number 10  
Issue #335

Combining Arts,  
Education, and  
Community Outreach

1979 - 2007 : 28 Years of Combining Arts, Education, and Community Outreach

## ONE OF TODAY'S MOST SUCCESSFUL INDEPENDENT GROUPS -- MAD AGNES -- prepare to be amazed

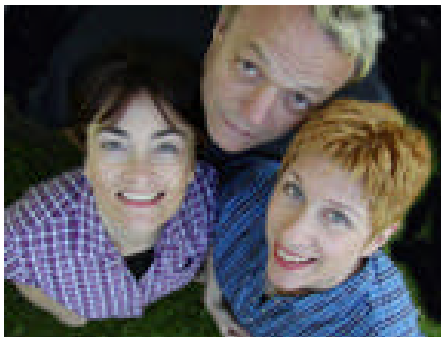
plus the annual CSA holiday pot luck

The CSA meeting for December will be held  
Tuesday December 4, 7:15pm Glastonbury YMCA  
([Directions on page 2](#))

Our special guests will be the nationally  
acclaimed trio, MAD AGNES, known coast to  
coast as one of today's most successful Indie acts.  
In addition to sharing some of their amazing  
musicianship, they will talk about their promotion  
and marketing strategies. If you have never seen  
Margo, Mark, and Adrian in person, prepare to be  
amazed by this rare combination of songcrafting,  
musical versatility, and consummate performance  
professionalism.

In addition to the presentation by Mad Agnes,  
this will be our traditional end-of-year pot-luck  
buffet, so bring a dish to share and a beverage.  
There is a microwave available. Please bring paper  
goods, and a serving spoon if needed for your  
dish. Bring a non-alcoholic beverage and cups.

### MAD AGNES



This is a great evening to meet some top music  
professionals, enjoy some good food, and network  
with other like-minded creative folks.

**BRING A FRIEND !**

**CSA CRITIQUE SESSIONS:** At regular monthly  
meetings, following the presentation, as time  
permits, there will be a song critique session. To  
participate, bring a song on cassette or CD, or do it  
live, with 20 copies of typed lyric sheets, and receive  
constructive feedback. Critique sessions are a good  
forum for works in progress or rough demos. For  
best feedback, note on your lyric sheets the  
intended genre and audience for your song, and  
what your goals are (i.e. picked up by a  
commercial artist, self-produce, etc.. Do NOT state  
what the song is "about"). For non-members, \$5 of  
your registration fee is applicable toward  
membership if you join within 30 days. Members  
are encouraged to bring a friend who might be  
interested in what CSA offers. .

=====

**DECEMBER PERFORMANCE EVENT:** Saturday  
December 1, 7pm at Union Baptist Church, Mystic  
(preshow music begins at 6:15pm) The 12th Annual  
LUNCH Holiday Show. Tickets: \$10 (\$8 for CSA  
members). Proceeds benefit social service  
programs through L.U.N.C.H.

**COMING January 15: How to be Your Own  
Publisher and Maximize Income From Your Music**

### CSA EVENTS CALENDAR

(for complete listing see <http://www.ctsongs.com>)

- Nov 13 - CSA Mtg, Wesleyan University - The Complete Package
- Dec 01 - LUNCH Holiday Concert, New :London
- Dec 04 - CSA Meeting with the incredible **MAD AGNES !**  
Do Not Miss This Opportunity !
- Jan 15 - How to Be Your Own Publisher and Maximize  
your Music Income.
- April 19 - CSA Spring PRO WORKSHOP: A Master Class with top  
songwriting instructor Pat Pattison from Berkeley School of Music

**COMBINING ARTS, EDUCATION, AND COMMUNITY OUTREACH FOR 28 YEARS**

Guiding Songs Along the Path from Creation to Realization to Proliferation

## How to Get There!

**Directions to Glastonbury YMCA :** From I-91 going north or south: Take Exit 25 over the CT River onto Route 3 to Glastonbury. Bear right onto Route 2 towards Norwich. Take Exit 8 (Hebron Av.) off Route 2 and go right at the late onto Hebron Av. Go right at the next late which is New London Turnpike. Take first left (Welles St.) and a quick right into the Fox Run Mall. Go straight, park anywhere and look for CSA signs near People's Bank. From I-84 east or west: Take Exit 55 onto Route 2 towards Glastonbury to Exit 8. See above. From Norwich / New London area: Take Route 2 to Exit 8 in Glastonbury and go right and a quick left onto Hebron Av. Go 2 lites to New London Tpke. See above

NOTE: CSA Marketplace/Classified Ads, and Member Happenings are now online 24/7 at the CSA website. You can go there any time at [www.ctsongs.com](http://www.ctsongs.com).

## GET A TAX DEDUCTION FOR YOUR OLD STUFF !

If you have any old music or office equipment lying around or just old "stuff" that you don't need, consider donating it to CSA and you'll get a generous tax deduction !

CSA is a 501(c)(3) non-profit organization and all items donated to us can be deducted at their maximum fair market value. We have helped many folks get nice deductions for their old items, which certainly can be useful to us either in our regular CSA programs or our community outreach programs through LUNCH.

We can use any office equipment and supplies, old computers, any type of music and studio equipment, and any type of item that could be used for auction or raffle. We'll provide a tax receipt that will give you the best possible tax-deduction.

If you have anything that you might like to donate, contact Bill Pere at [bill@billpere.com](mailto:bill@billpere.com)

## CSA COMPILATION UPDATE:

The deadline for submitting songs to the 2007 CSA compilations was October 31, 2007. Interestingly, exactly on that day, the CSA mailbox was stuffed with CDs. Musician's as a group tend to wait till the last minute for things -- one secret that has been reinforced over the years by many of the music industry pros that come and speak to us is the age-old saying, "the early bird catches the worm". One simple way to stand out from the crowd in the music game is to be early.

For the four categories that we have been collecting, here is the status:

1. Love Songs -- As you might expect, we are awash in love songs ! Everyone has love songs. This category is closed to further submissions. We will be reviewing the songs we have and looking for the more unusual love songs to include in the compilation. We expect an early 2008 release for this CD.
2. Holiday Songs -- we have enough for the CD but if you have a holiday song and want to get it in really quickly, we could take a couple more in this category, but it has to be soon, as we'd like to get this released within the next few weeks.
3. Patriotic/Americana -- We will still take submissions in this category until February 15 2008, and we hope to release the compilation in Spring 2008.
4. Humor/Novelty songs -- Surprisingly, this category had the fewest submissions, so we will hold it open through the 2008 cycle or until we get enough to fill all the slots, whichever comes first. If you have any kind of humorous, topical or off-beat song, send it along. This will be a very unusual and probably popular CD, as folks like songs that make them smile.

**FOR THE NEW 2008 COMPILATION CATEGORIES, See the Announcement on page 4.**





# Veteran's Day Concert

An Event to Support Social Services in Southeastern Connecticut and to Honor the Men and Women Who Have Served Our Country

Please bring a non-perishable food item for the Pawcatuck Neighborhood Center Food Pantry

A TRIBUTE TO  
THE MEN AND  
WOMEN WHO  
SERVE OUR  
COUNTRY

There are more than  
250,000 Homeless  
Veterans

Sat, Nov 10, 2007  
7:00pm

Union Baptist  
Church, Mystic

(corner Rt 1 and High St)



The LUNCH Ensemble

Family Entertainment at its Best !

Students from local area schools join the  
LUNCH Ensemble with  
national award-winning artists  
Bill Pere, Kay Pere, Tom Callinan



Founded 1989 by Bill Pere

### TICKETS:

At the door -- \$10 (adult)  
\$6 (under 13)  
In advance: - \$8 (adult)  
\$5 (under 13)

Call 860-572-9285 to  
reserve with your  
credit card



Bill Pere - Official CT  
State Troubadour  
and National IMC  
Artist of the Year



Kay Pere - National  
Award Winning  
Songwriter and  
Recording Artist



Tom Callinan -  
Connecticut's FIRST  
State Troubadour, and a  
"Connecticut Treasure"

Proceeds to benefit local Social Services through L.U.N.C.H.

[www.lunchensemble.com](http://www.lunchensemble.com)

Visit us on the Web



# CALLING ALL WRITERS

## ANNOUNCING THE CSA 2008 COMPILATIONS

Get your songs in by October 31, 2008 to insure eligibility! (after 10/31, contact us for status)

CSA Compilation CDs have received radio airplay and are displayed at national conferences, and the digital downloads pay artist royalties.

**1: SONGS of SOCIAL RELEVANCE** - Songs that address an issue of social importance -- hunger, homelessness, the environment, substance abuse, global warming..... This is your chance to speak out and be heard. TIP: Don't just write a song that preaches -- Make your point by showing it, not telling it.

**2: SPIRITUAL/INSPIRATIONAL SONGS** - Our 3rd collection in this very popular series. See our previous Spiritual/Inspirational collections "Share the Journey" and "Along the Road" for examples of songs that fit this category.

**3: HUMOROUS/NOVELTY SONGS** - We started this category in 2007 but we're continuing to collect songs in this group, as we still have space -- If your song doesn't fit anywhere else, this is probably the place. We want songs about off-beat topics, written with a twinkle in your eye and a tongue-in-cheek. Let's bring some laughter into the world!

### GUIDELINES:

- At least one writer must be a current CSA member
- All songs must be professionally produced, up to 'radio-ready' standards.
- Social Relevance songs must address a specific topic and social issue, such as hunger, homelessness, substance abuse, the environment, global warming, etc...
- Spiritual Inspirational songs must be appropriate to the category. See examples on the previous CSA Compilations "Share the Journey" and "Along the Road".
- Songs for the Humorous/Novelty compilation must be appropriate for the theme of the collection. Songs should feature unusual topics, tongue-in-cheek lyrics designed to bring a smile to the listener, or to just present a totally whimsical idea or story.

#### Please specify for which CD Collection you are submitting.

- Any musical style is okay
- Submission is NOT a guarantee of acceptance. Songs will be selected based on :
  - Appropriateness to the theme
  - Song Crafting
  - Production Quality (must be professionally recorded and radio-ready)
  - Available space on the CD (if there are more acceptable submissions than can fit on the CD, those submitted earlier and those of shorter length will be given greater consideration.
- Songs must not violate the terms of any third-party agreement (e.g. with a publisher). Unsigned songs are preferred. If a song is under contract to a publisher, a signed release from the publisher must be provided.
- Songs may not have been included on any previous CSA Compilation
- Submissions will not be returned.
- At CSA discretion, songs from the compilations may be made available for digital downloads, with royalties paid to the writers.

#### TO SUBMIT, PLEASE SEND THE FOLLOWING:

- A recording of the song on CD, suitable for duplication (put your name and contact info on the CD)
- Clearly indicate the TIME of the track, in minutes: seconds
- A lyric sheet (put your name and contact info on the lyric sheet)
- A signed release form, printed out from the CSA web site ([www.ctsongs.com](http://www.ctsongs.com))
- A non-refundable one-time \$10 per song processing fee payable to CSA (there are no additional costs, whether a song is accepted for inclusion or not)

Send your recording, lyric sheet, release form, and \$10 to CSA, PO Box 511, Mystic CT 06355.

IF YOU HAVE A SONG which is not yet fully produced and you want to know if it acceptable for consideration before doing the production, you may bring it to a CSA critique session

# WHAT'S AHEAD for CSA ?

COMING NOVEMBER 6

## THE COMPLETE PACKAGE

When sending out a package to a publisher, radio DJ, artist, booking agent, reviewer, or any other music professional or potential consumer, have you thought about:

- What kind of paper to use?
- What kind of folder ?
- What kind of CD label ?
- What kind of CD Case ?
- Is one color better than another ?
- Plain font or distinctive ?
- Paper press kit or electronic ?
- Should I use Sonic Bids ?
- Does it matter where my contact information is located ?
- How should I lay out my lyric sheet ?
- How should I address correspondence ?
- Should I include a photo ?
- What information should I include or omit ?
- Should I use a pseudonym ?
- Is it an advantage to belong to a PRO ?
  
- What else can make me be taken more seriously ?

COMING JANUARY 15

In response to the most frequently asked questions over the last year, we will be presenting a session devoted to addressing those questions.

### HOW TO BE YOUR OWN PUBLISHER AND MAXIMIZE YOUR MUSIC INCOME

We'll discuss all the myths, facts, and misconceptions about things like copyrights, royalties, publishing, distribution, collaboration agreements, derivative works, compulsory license, sync license, ASCAP/BMI, and lots of other stuff. Details in next month's newsletter.

COMING in FEBRUARY

The return of one of CSA's most popular presentations,  
The AXE-MAN and the TAX-MAN

Everything you need to know to about how to keep the right records and handle the tax issues and get the biggest deductions related to your music endeavors. A little knowledge can save you significant amounts of money. Details in next month's newsletter.

COMING APRIL 19

## CSA SPRING PRO WORKSHOP

A Master Class with one of the nation's top songwriting instructors, Pat Pattison from Boston's Berkelee School of Music. Pat is the author of several widely used books on songwriting, and will be presenting a nuts and bolts workshop on songcrafting, and re-writing. Also, Pat's critiques are among the most direct in the business, and present an incredible opportunity to get insight which can bring your songs to the next level.

Registration details will be forthcoming -- stay tuned, and plan to register early.





*Using the power of  
popular music to  
produce positive  
social action*

LOCAL  
UNITED  
NETWORK to  
COMBAT  
HUNGER

presents

FAMILY  
ENTERTAINMENT AT  
ITS BEST

Songs of the Season, both humorous and  
thoughtful, to benefit Local Family Service  
Agencies

FEATURING

**Bill Pere, Kay Pere, Larry Batter,  
and the LUNCH Ensemble**

*and maybe a surprise sighting of Elves,  
and other unexpected characters*

*On behalf of Connecticut's 100,000 hungry children,  
Thanks for Caring.*

## A Family Concert Event!

to benefit local Social Services

### **The 2007 L.U.N.C.H. Holiday Concert**

**Coming Down your  
Chimney on  
Saturday,  
December 1,  
7:00pm**

**with special  
pre-show holiday and  
sing-along music  
beginning at 6:15pm**

**Union Baptist Church  
(corner Rt 1 and High St)  
Mystic**

#### **TICKETS:**

**\$ 8** in advance  
**\$10** at the door

**Reserve in Advance  
with Visa or  
Mastercard  
Call 860-572-9285  
to reserve.**



**FOOD FOR THOUGHT -- YOU CAN MAKE A DIFFERENCE**

