

Connecticut Songsmith

Newsletter of the Connecticut
Songwriters Association



CSA is an educational, non-profit organization dedicated to
improving the art and craft of original musical and lyrical composition.
Serving music's artisans and craftsmen since 1979.



June 2007
Vol. XXVIII
Number 6
Issue #331

Combining Arts,
Education, and
Community Outreach

1979 - 2007 : 28 Years of Combining Arts, Education, and Community Outreach

Getting the Most out of a Recording Session

Tuesday June 5, 7:15
PM
Glastonbury YMCA

Also in June: The CSA Summer Showcase/Picnic - June 17, 1-6pm J.B. Williams Park, Glastonbury

The CSA meeting for June will be held on Tuesday, June 5, 7:15 pm at the Glastonbury YMCA (directions on page 2)

What pre-work do you need to do before a recording session to make sure you get the best value for your time, and get the result you want? What questions should you ask in advance? What should you have in hand when it's all over? The answers to these simple questions can save you lots of time, money, and blood pressure when dealing with producers and studios.

Our special guest is Don Langella, studio manager of Trod Nossel, which is the longest continuously operating studio in the Northeast. Located in Wallingford CT, the studio has a great history, playing host to the likes of Fleetwood Mac and many other legends, and it is a living museum of many decades of recording history. Whether you are making home demos, or full studio masters, come learn how to get the most from your recording sessions.

Following the presentation, there will be a song critique session. Bring a song on CD or do it live, with 20 copies of typed lyric sheets. This meeting is FREE to members (\$5 to non-members)

COMING JUNE 1 -- At the Shubert Theater in New Haven. The original Harry Chapin Band performs with CSA artists and the LUNCH Ensemble to benefit social services. CSA members receive a 10% discount on tickets. visit www.lunchensemble.com

CSA CRITIQUE SESSIONS: At regular monthly meetings, following the presentation, as time permits, there will be a song critique session. To participate, bring a song on cassette or CD, or do it live, with 20 copies of typed lyric sheets, and receive constructive feedback. Critique sessions are a good forum for works in progress or rough demos. **For best feedback, note on your lyric sheets the intended genre and audience for your song, and what your goals are (i.e. picked up by a commercial artist, self-produce, etc.. Do NOT state what the song is "about").** For non-members, \$5 of your registration fee is applicable toward membership if you join within 30 days. Members are encouraged to bring a friend who might be interested in what CSA offers. .

CSA EVENTS CALENDAR

(for complete listing see <http://www.ctsongs.com>)

- Jun 01- Special Concert at the Shubert Theater in New Haven with the original Chapin Band
- Jun 05 - CSA meeting "Preparing to Go into the Studio" - Glastonbury
- Jun 17 - CSA Summer Showcase/Picnic
- Jul 10 - CSA Meeting "Your Creative Compass" - Middletown
- Aug 26 - CSA Summer Showcase/Picnic
- Sep 1 -- IMC Philadelphia
- Sep 15 - CSA Performance Collaboration and Day of Praise Concert at St James Episcopal Church, West Hartford
- Oct - CSA Workshop
- Dec 01 - LUNCH Holiday Show
- Nov 10 Veterans Day Tribute Concert
- Dec - CSA Holiday Songshare/Potluck

COMBINING ARTS, EDUCATION, AND COMMUNITY OUTREACH FOR 28 YEARS

Guiding Songs Along the Path from Creation to Realization to Proliferation

DIRECTIONS TO MEETING LOCATIONS

How to
Get There!

Directions to Glastonbury YMCA: From I-91 going north or south: Take Exit 25 over the CT River onto Route 3 to Glastonbury. Bear right onto Route 2 towards Norwich. Take Exit 8 (Hebron Av.) off Route 2 and go right at the late onto Hebron Av. Go right at the next late which is New London Turnpike. Take first left (Welles St.) and a quick right into the Fox Run Mall. Go straight, park anywhere and look for CSA signs near People's Bank. **From I-84 east or west:** Take Exit 55 onto Route 2 towards Glastonbury to Exit 8. See above. **From Norwich / New London area:** Take Route 2 to Exit 8 in Glastonbury and go right and a quick left onto Hebron Av. Go 2 lites to New London Tpk. See above

CSA COMPILATIONS FOR 2007 -- The CSA CD "Along the Road" is now released as the 15th addition to our ever growing library. Our compilations have received airplay and made available online and at national conference events.

For this coming year, CSA will be accepting songs for FOUR themed compilations.

- 1 -- LOVE SONGS -- Yes love songs, but not just any love songs. We want well crafted songs with a fresh approach to this often-overdone topic. Think out-of-the-box.
- 2 -- HUMOROUS/NOVELTY SONGS. If it doesn't fit anywhere else, this is probably the place. We want songs about off-beat topics, written with a twinkle in your eye and tongue-in-cheek. Let's bring some laughter into the world!
- 3 -- PATRIOTIC/AMERICANA. If you have patriotic songs, 9/11 songs, historical ditties or American nostalgia, this is the place for them. NO OVERTLY POLITICAL SONGS.
- 4 -- HOLIDAY SONGS. There is still space on the 2006 Holiday Song collection., so we are holding open and still accepting songs for a Fall 07 release. Christmas, Hanukkah, New Years, Thanksgiving. (All songs previously submitted for this collection in 2006 are already accepted and do not need to be resubmitted.)

Songs from the compilations will be available for worldwide digital download with royalties being paid to the writers. Get in and ride the digital distribution wave. **GET YOUR SONGS IN BY OCTOBER 31 2007.** After Oct 31, inquire info@ctsongs.com for status.

CSA CALL FOR VOLUNTEERS

FRIDAY JUNE 1 -- If anyone would like to help out at the concert at the Shubert Theater with the original Chapin Band, we need someone to take photos of the event. We would designate you as an authorized photographer and you'd get a free pass to the show. If you're interested, contact Bill Pere at info@ctsongs.com

NOTE: CSA Marketplace/Classified Ads, and Member Happenings are now online 24/7 at the CSA website. You can go there any time at www.ctsongs.com.

GET A TAX DEDUCTION FOR YOUR OLD STUFF !

If you have any old music or office equipment lying around or just old "stuff" that you don't need, consider donating it to CSA and you'll get a generous tax deduction !

CSA is a 501(c)(3) non-profit organization and all items donated to us can be deducted at their maximum fair market value. We have helped many folks get nice deductions for their old items, which certainly can be useful to us either in our regular CSA programs or our community outreach programs through LUNCH.

We can use any office equipment and supplies, old computers, any type of music and studio equipment, and any type of item that could be used for auction or raffle. We'll provide a tax receipt that will give you the best possible tax-deduction.

If you have anything that you might like to donate, contact Bill Pere at bill@billpere.com

DISCOUNT FOR CSA MEMBERS -- USE CODE "CSA"



**Local United Network to Combat Hunger
and
Liberty Community Services**



present

**New Haven's
Tribute to Harry Chapin**

to Benefit Social Services in the Greater New Haven Area

Friday, June 1, 2007 7:30pm at the Shubert Theater
247 College St, New Haven

Tickets: \$15 - \$20 203-562-5666 or 888-736-2663
or online at www.capa.com/newhaven

Big John Wallace

Steve Chapin

Howard Fields



The

STEVE CHAPIN BAND

with Bill Pere and the LUNCH Ensemble

PERFORMANCE AND NETWORKING OPPORTUNITY !
THE 2007 CSA SUMMER SHOWCASE/PICNIC # 1



RAIN OR SHINE

Hot Fun in the Summertime

RAIN OR SHINE !

Sunday, June 17 from 1pm to 6pm at J.B. Williams Memorial Park, on Neipsic Rd, Glastonbury. **RAIN OR SHINE !** CSA returns to this gorgeous facility for our popular annual event. There is a large covered pavilion with electricity, picnic tables, grills, volleyball, playground, hiking trails, pond, and convenient parking. We will host an all-day showcase, from 1pm to 6pm with sound systems provided. CSA members and friends may reserve up to a 1/2 hour slot to showcase original songs. Don Donegan is booking the slots on a first call basis. If you'd like to perform, call Don at 860-659-8992 or e-mail at DDCSA@aol.com.

Please bring your own food for the grill, a non-alcoholic beverage, a dish to share and some picnic items like plates, cups, and napkins. The event is free, so bring family and friends.

Directions:

From New London/Norwich : Take Rt 12 west to Exit 8 in Glastonbury. Go right, and right again onto Hebron Ave. Go 2 miles and turn right onto Wickham Rd. Go to end of Wickham and turn left on Neipsic. The park is one block on the left. >>> **From New Haven:** Take I-91 North to Exit 25, Glastonbury. Cross CT River on Rt 3 and bear right on Rt 2 towards Norwich. Take Exit 9 off Rt 2 and go left on Neipsic Rd under Rt 2. Go 3/4 mile to park on the left. **From Hartford:** Take I-91 South to Exit 25 (Glastonbury) and proceed as above. **From I-84 East or West:** Take Rt 2 to Glastonbury to Exit 9 (Neipsic Rd) and proceed as above.

EACH YEAR DOZENS OF SONGWRITERS AND FRIENDS COME AND GO THROUGHOUT THE DAY.

COME RELAX, SCHMOOZE, SHARE A SONG, AND ENJOY THE COMPANY OF CREATIVE PEOPLE

**It's a Picnic, so please bring food for yourself and stuff to share,
including paper goods, napkins, utensils, etc.**

Previous editions of this event have received good press coverage with performers photos appearing in the newspaper

**FOR PHOTOS OF PRIOR SHOWCASES, visit the Photo Albums
at the CSA Website (www.ctsongs.com)**

COMING IN JULY

**A WORKSHOP ON the Creative Process: Overcoming blocks,
obstacles, and developing Sustainable Creativity.**

YOUR CREATIVE COMPASS

July 10, 7:15pm Wesleyan University, Middletown



CALLING ALL WRITERS

SONGS ARE NOW BEING ACCEPTED FOR THE NEXT CSA COMPILATIONS

The next CSA compilations will be

1: LOVE SONGS - but not just any love songs. We want well crafted songs with a fresh approach to this often-overdone topic. Think out-of-the-box.

2: HUMOROUS/NOVELTY SONGS - If it doesn't fit anywhere else, this is probably the place. We want songs about off-beat topics, written with a twinkle in your eye and tongue-in-cheek. Let's bring some laughter into the world!

3: PATRIOTIC/AMERICANA . If you have patriotic songs, 9/11 songs, historical ditties or American nostalgia, this is the place for them. **NO OVERTLY POLITICAL SONGS.**

4: HOLIDAY SONGS. There is still space on the 2006 Holiday Song collection., so we are holding open and still accepting songs for a Fall 07 release. Christmas, Hanukkah, New Years, Thanksgiving. (All songs previously submitted for this collection in 2006 are already accepted and do not need to be resubmitted.)

GUIDELINES:

- At least one writer must be a current CSA member
- All songs must be professionally produced, up to 'radio-ready' standards.
- Songs for the Love Song collection must be well crafted and provide a fresh approach to some aspect of love and relationships. It is recommended that songs be critiqued before submitting, however this is not required. Preference will be given to songs which present a new and unusual perspective on love or which have a really great musical hook or melody.
- Songs for the Humorous/Novelty compilation must be appropriate for the theme of the collection. Songs should feature unusual topics, tongue-in-cheek lyrics designed to bring a smile to the listener, or to just present a totally whimsical idea or story.
- Patriotic/Americana includes songs that reflect patriotism, commemorate 9/11 or any other historical event, or present a look at uniquely American nostalgia or a part of our culture. Purely political songs are not appropriate for this collection.
- Holiday songs may reflect a Christmas, Hanukkah, New Years or Thanksgiving theme.

Please specify for which CD you are submitting.

- Any musical style is okay
- Submission is NOT a guarantee of acceptance. Songs will be selected based on :
 - Appropriateness to the theme
 - Song Crafting
 - Production Quality (must be professionally recorded and radio-ready)
 - Available space on the CD (if there are more acceptable submissions than can fit on the CD, those submitted earlier and those of shorter length will be given greater consideration.
- Songs must not violate the terms of any third-party agreement (e.g. with a publisher). Unsigned songs are preferred. If a song is under contract to a publisher, a signed release from the publisher must be provided.
- Songs may not have been included on any previous CSA Compilation
- Submissions will not be returned.
- At CSA discretion, songs from the compilations may be made available for digital downloads, with royalties paid to the writers.

TO SUBMIT, PLEASE SEND THE FOLLOWING:

- A recording of the song on CD, suitable for duplication (put your name and contact info on the CD)
- A lyric sheet (put your name and contact info on the lyric sheet)
- A signed release form, printed out from the CSA web site (www.ctsongs.com)
- A non-refundable one-time \$10 per song processing fee payable to CSA (there are no additional costs, whether a song is accepted for inclusion or not)

Send your recording, lyric sheet, release form, and \$10 to CSA, PO Box 511, Mystic CT 06355.

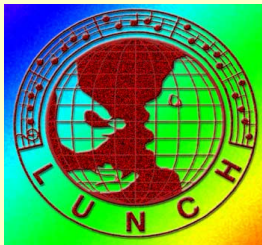
IF YOU HAVE A SONG which is not yet fully produced and you want to know if it acceptable for consideration before doing the production, you may bring it to a CSA critique session .



**Connecticut
Songwriters
Association**

(www.ctsongs.com)

and



**Local
United
Network to
Combat
Hunger**

(www.lunchensemble.com)

**26 YEARS of
Using the Power
of Popular
Music to
Produce
Positive Social
Action**

SATURDAY SEPT 15, 2007
St. James Episcopal Church, West Hartford

A DAY OF PRAISE

CSA PERFORMANCE COLLABORATION AND RELEASE CONCERT FOR "Along The Road"

Spiritual and Inspirational Music to Benefit Local Social Services
(see www.lunchensemble.com)

- 1:00pm - 5:00pm: Gather to learn each other's songs to play and sing backup as needed. Sound Check.
- 5 - 6:00 pm: Fellowship dinner (bring a dish to share - kitchen facilities available)
- 6 - 6:30pm: Kitchen cleanup, set up post-show reception for audience
- 6:30pm: Doors open for concert
- 7 - 9 pm: Concert, open to the public. (Tickets: \$10)

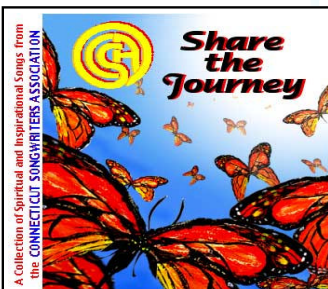
Registration in advance is only \$10 for the entire program

All CSA members are welcome to participate in performing the songs. Artists who have songs on either the "Share the Journey" or "Along the Road" CD are invited to present the song at the concert, and to teach the other artists any back-up parts you may want. It is your responsibility to provide written chord sheets, music, and lyrics as needed. We will have approximately 20 minutes to work on each song., so keep it simple.

If you do not have a song on the CD but would like to perform at the concert: Contact Bill Pere at bill@ctsongwriting.com . **We welcome other performers to do backup parts on the songs.**

All registrants may have a spot on the merchandise table to display and sell CD's. It is requested that \$1 of each item sold be donated to LUNCH

On Behalf of the 100,000 hungry children in Connecticut, Thanks for Caring



St James's Episcopal Church West Hartford
www.stjameswh.org
19 Walden St, West Hartford, 06107
(860) 521-5756

